

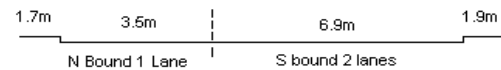
YEAR 2016

COVERAGE (B) STATION 2202

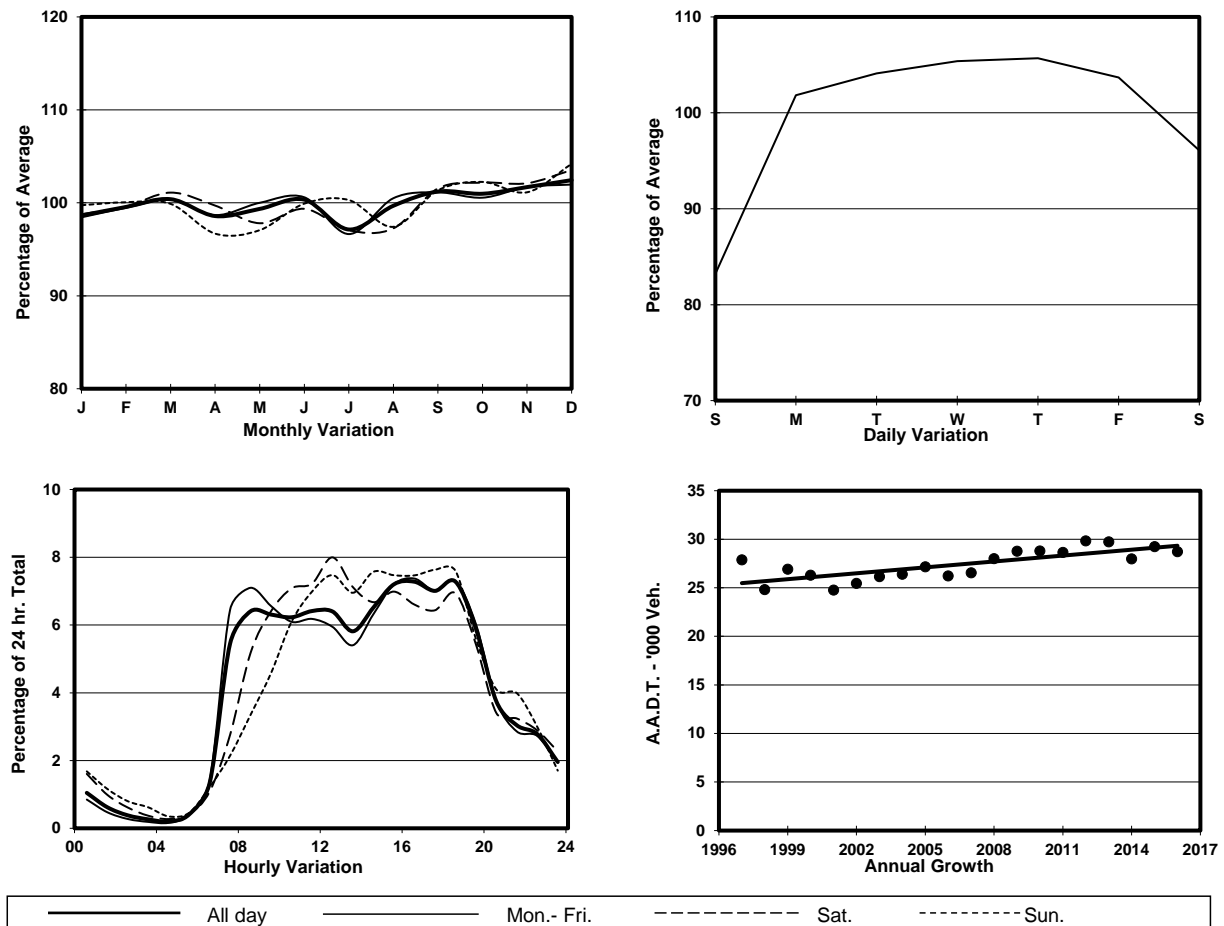
ROAD NETWORK MAJOR

ROAD TYPE DISTRICT DISTRIBUTOR

LINK WONG NAI CHUNG GAP RD (from STUBBS RD FO  
<H119> SOUTHERN END to REPULSE BAY RD)



## 1. TRAFFIC FLOW VARIATION AND GROWTH



## 2. TRAFFIC CHARACTERISTICS (BY DIRECTION)

Parameter	All - Day	Mon. - Fri.	Sat.	Sun.
<b>SOUTH BOUND</b>				
A.A.D.T.	13240	13740	13210	11610
R 12 / 24 - %	78.3	78.6	78.5	76.5
R 16 / 24 - %	94	94.3	93.1	93
AM Peak Hour	0900-1000	0700-0800	0900-1000	0900-1000
One-way flow at AM peak hour	860	940	880	550
T - % (AM)	-	12.4	-	-
PM Peak Hour	1600-1700	1600-1700	1600-1700	1600-1700
One-way flow at PM peak hour	950	980	920	890
T - % (PM)	-	5.2	-	-
Prop.of commercial vehicles - 16 hr.	-	4.5	-	-
<b>NORTH BOUND</b>				
A.A.D.T.	15480	16450	14610	12500
R 12 / 24 - %	78.3	79.2	76.4	74.3
R 16 / 24 - %	93.6	94.4	91.7	91.1
AM Peak Hour	0800-0900	0800-0900	0900-1000	0900-1000
One-way flow at AM peak hour	1060	1280	910	560
T - % (AM)	-	5	-	-
PM Peak Hour	1800-1900	1800-1900	1800-1900	1800-1900
One-way flow at PM peak hour	1200	1250	1130	1110
T - % (PM)	-	1.9	-	-
Prop.of commercial vehicles - 16 hr.	-	4.8	-	-

## 3. OTHER INFORMATION AND COMMENT

**Coverage (B) Station 2202**  
**Year 2016**

**4. Vehicle classification and occupancy - Monday to Friday**

Time		Class of vehicle									
		Motor	Private	Taxi	Private	PLB	Goods veh.		Non	Fr. Bus	
		Cycle	Car		LB		Light	M & H	Fr. Bus	SD	DD
0700-0800	Pro	5.5	47.6	26.0	3.4	1.5	2.4	0.9	10.4	0.5	1.8
	Ocp	1.1	1.4	1.7	7.3	13.2	1.4	1.3	19.6	29.5	43.2
0800-0900	Pro	3.1	70.2	18.0	0.5	0.9	3.6	0.7	1.8	0.2	1.0
	Ocp	1.1	1.2	1.9	2.3	10.2	1.7	1.0	17.9	12.0	29.5
0900-1000	Pro	2.8	65.8	17.7	0.0	0.9	10.0	0.9	0.7	0.3	1.0
	Ocp	1.2	1.3	1.9	0.0	11.5	1.4	1.5	10.7	15.2	27.8
1000-1100	Pro	2.7	64.3	19.0	0.6	0.2	10.4	0.6	1.1	0.3	0.8
	Ocp	1.1	1.3	1.8	1.0	17.0	1.5	1.7	12.0	18.0	26.1
1100-1200	Pro	3.7	63.3	14.3	2.1	0.6	11.0	1.4	2.7	0.3	0.7
	Ocp	1.1	1.3	1.9	2.2	9.7	1.4	1.6	9.0	13.2	22.0
1200-1300	Pro	2.5	41.7	31.2	3.2	0.7	13.3	0.7	5.3	0.4	1.2
	Ocp	1.1	1.4	1.7	8.3	4.0	1.5	2.5	20.3	18.5	27.9
1300-1400	Pro	3.7	62.0	18.0	1.3	0.5	6.9	0.5	5.6	0.2	1.2
	Ocp	1.2	1.3	1.6	4.6	15.5	1.5	1.0	28.9	7.3	17.0
1400-1500	Pro	3.8	57.6	19.6	2.5	0.5	11.9	0.9	2.3	0.2	0.8
	Ocp	1.2	1.3	1.6	3.1	11.5	1.6	1.3	14.2	8.3	21.7
1500-1600	Pro	2.5	60.5	18.6	3.7	0.2	8.7	0.6	4.3	0.1	0.8
	Ocp	1.1	1.3	2.0	8.3	9.0	1.6	1.7	13.5	16.0	24.8
1600-1700 Peak hour	Pro	1.4	67.8	16.8	2.0	0.2	7.4	0.5	2.7	0.2	1.0
	Ocp	1.1	1.5	1.9	3.6	17.0	1.6	1.7	16.5	14.8	27.1
1700-1800	Pro	4.6	66.2	18.5	0.7	0.4	4.8	0.2	3.2	0.2	1.2
	Ocp	1.1	1.3	1.8	2.8	15.5	1.8	1.0	17.3	17.8	35.4
1800-1900	Pro	5.0	68.6	19.0	0.4	0.4	2.7	0.0	2.7	0.2	0.9
	Ocp	1.2	1.4	2.0	3.0	15.5	1.8	0.0	21.9	16.5	37.5
1900-2000	Pro	3.6	66.6	25.4	0.0	0.2	1.5	0.2	1.1	0.2	1.3
	Ocp	1.0	1.3	1.7	0.0	14.0	1.4	1.0	21.2	13.0	23.8
2000-2100	Pro	2.2	60.5	32.8	0.4	0.7	1.5	0.4	0.4	0.3	1.0
	Ocp	1.0	1.4	1.5	2.0	8.0	1.0	1.0	23.0	6.3	15.6
2100-2200	Pro	1.5	58.5	34.5	0.0	1.0	2.5	0.0	0.5	0.3	1.3
	Ocp	1.0	1.3	1.7	0.0	10.5	1.2	0.0	1.0	7.5	14.2
2200-2300	Pro	3.6	44.3	47.0	0.9	0.9	0.4	0.9	0.4	0.4	1.0
	Ocp	1.1	1.4	1.5	2.5	4.0	1.0	2.5	16.0	9.3	11.4
16 hours	Pro	3.3	62.1	21.5	1.4	0.6	6.5	0.6	2.8	0.2	1.0
	Ocp	1.1	1.3	1.8	5.1	11.3	1.5	1.5	18.2	14.9	27.1

**Legend**

**Pro.** Proportion of vehicles in % (Sum may not add up to 100% due to figure rounding)\*

**Ocp.** Average occupancy of vehicles including both driver and passengers\*

**M&H** Medium and Heavy

\* All traffic data are collected from combined bounds except for one way traffic